

**A K I L A**



AKILA is an independent eyewear brand from Los Angeles focused on handmade, limited-run eyewear.

We are advocates of sustainability and craft our eyewear from eco-friendly acetate, plant-based lenses, and biodegradable packaging. Style and sustainability can coexist.

RESPECT THE SUN™

**A K I L A**

COMING SOON  
ESSENTIALS  
ALUMINUM OPTICAL  
COLLABORATIONS

5 - 23  
25 - 083  
85 - 125  
127 - 65



Satchid wearing MUSA 2314 08 4X

## **An independent frame of mind.**

AKILA is beholden to no one. We exercise complete independence in what we create and who we collaborate with, to bring you the best eyewear possible.

## **Size Guide**

00 □ 00 - 000 / 000

—————▶ LENS □ BRIDGE - TEMPLE / FRAME

## **COMING SOON**

See what's on the horizon from AKILA, including new seasonal collections and collaborations.

A 2401 01 01



## Era

SPRING 24

ESSENTIALS

### DESCRIPTION

Era is a distinct look that can be dressed up boldly or worn casually for more lowkey vibes. The frame features a subtle hexagon shape, and is finished with two-pin rivets and custom-engraved temple cores.

### FEATURES

- Eco-conscious acetate frame
- Optical Class 1 nylon lenses for clarity and durability
- 100% UVA/UVB protection
- Durable 5-barrel hinges with stainless steel temple cores for strength and flexibility

### SIZING

46 □ 22 - 145 / 141

A 2401 02 86



A 2401 96 32



A 2401 05 34





A 2207 01 01



## Miracle

SPRING 24

ESSENTIALS

### DESCRIPTION

Miracle carries retro vibes that can fit in with any era. This teardrop-shaped aviator frame features a slightly oversized shape and is finished with custom-engraved temple cores.

### FEATURES

- Eco-conscious acetate frame
- Optical Class 1 nylon lenses for clarity and durability
- 100% UVA/UVB protection
- Durable 5-barrel hinges with stainless steel temple cores for strength and flexibility

### SIZING

50 □ 21 - 145 / 141

A 2207 01 78



A 2207 94 46



A 2207 13 63



A 2402 01 01



## Syndicate

SPRING 24

ESSENTIALS

### DESCRIPTION

Syndicate is a classic rectangular design with subtle details for a more discerning look. This versatile frame is finished with triple-riveted ends and custom-engraved temple cores.

### FEATURES

- Eco-conscious acetate frame
- Optical Class 1 nylon lenses for clarity and durability
- 100% UVA/UVB protection
- Durable 5-barrel hinges with stainless steel temple cores for strength and flexibility

### SIZING

48 □ 25 - 145 / 147

A 2402 62 86



A 2402 55 44



A 2402 94 34



THE  
**BEATLES**

A 2413 01 33 B



A 2413 91 62 B



## Blackbird

SUMMER 24

COLLAB

### DESCRIPTION

The second officially licensed AKILA x Beatles collection is inspired by the band's classic self-titled White Album. Blackbird is a versatile square frame that pairs well with a variety of looks. This timeless design is constructed from durable acetate to last for many years and eras to come, and is finished with an embossed Beatles logo on the inner right temple.

### FEATURES

- Eco-conscious acetate frame
- Optical Class 1 nylon lenses for clarity and durability
- 100% UVA/UVB protection
- Durable 5-barrel hinges with stainless steel temple cores for strength and flexibility

### SIZING

48 □ 24 - 135 / 148



THE  
**BEATLES**

A 2412 01 01 B



A 2412 09 28 B



## Goodnight

SUMMER 24

COLLAB

### DESCRIPTION

AKILA have released their second volume of officially licensed sunglasses with The Beatles. Good Night is an oversized frame that's well-suited for bolder looks. This classic mod design has been updated with a modern fit and pays homage with an embossed Beatles logo on the inner right temple.

### FEATURES

- Eco-conscious acetate frame
- Optical Class 1 nylon lenses for clarity and durability
- 100% UVA/UVB protection
- Durable 5-barrel hinges with stainless steel temple cores for strength and flexibility

### SIZING

62 □ 20 - 120 / 143



**BRICKS  
& WOOD**

A 2415 01 01



## Lomita

SUMMER 24

COLLAB

### DESCRIPTION

LA-based apparel brand Bricks & Wood shares our spirit of focusing on quality – even if that means producing lower quantities. That's why we linked up to create Lomita, a vintage-inspired frame made in very limited numbers to ensure top craftsmanship.

### FEATURES

- Eco-conscious acetate frame
- Optical Class 1 nylon lenses for clarity and durability
- 100% UVA/UVB protection
- Durable 5-barrel hinges with stainless steel temple cores for strength and flexibility

### SIZING

63 □ 19 – 120 / 151

A 2415 25 28



A 2415 95 62





Keith Haring™

A 2223 09 01



A 2223 01 01



A 2223 22 22



A 2223 09 34



A 2223 55 23



## Paradise

SUMMER 24

COLLAB

### DESCRIPTION

“Art is for everybody” was a motto of artist Keith Haring—and these sunglasses live up to that philosophy. These minimalist sunglasses pay homage to the Pop art legend’s work with temple tips shaped like his famous line work. Inspired by glasses that Haring wore, these sunglasses have frames that are handmade from an eco-friendly cellulose acetate and come in a Keith Haring cork leather case with a custom cleaning cloth featuring Haring’s artwork.

### FEATURES

- Eco-conscious acetate frame
- Optical Class 1 nylon lenses for clarity and durability
- 100% UVA/UVB protection
- Durable 5-barrel hinges with stainless steel temple cores for strength and flexibility

### SIZING

43 □ 27 – 145 / 138



Keith Haring™

A 2224 09 01



## Radiant

SUMMER 24

COLLAB

### DESCRIPTION

Named after Keith Haring's "Radiant Child," AKILA's round optical features the pop artist's iconic feet on the temple tips. In partnership with the Keith Haring Foundation, exclusive packaging showcases his artwork on the case and cleaning cloths.

### FEATURES

- Eco-conscious acetate frame
- Optical Class 1 nylon lenses for clarity and durability
- 100% UVA/UVB protection
- Durable 5-barrel hinges with stainless steel temple cores for strength and flexibility

### SIZING

47 □ 27 - 145 / 143

A 2224 01 01



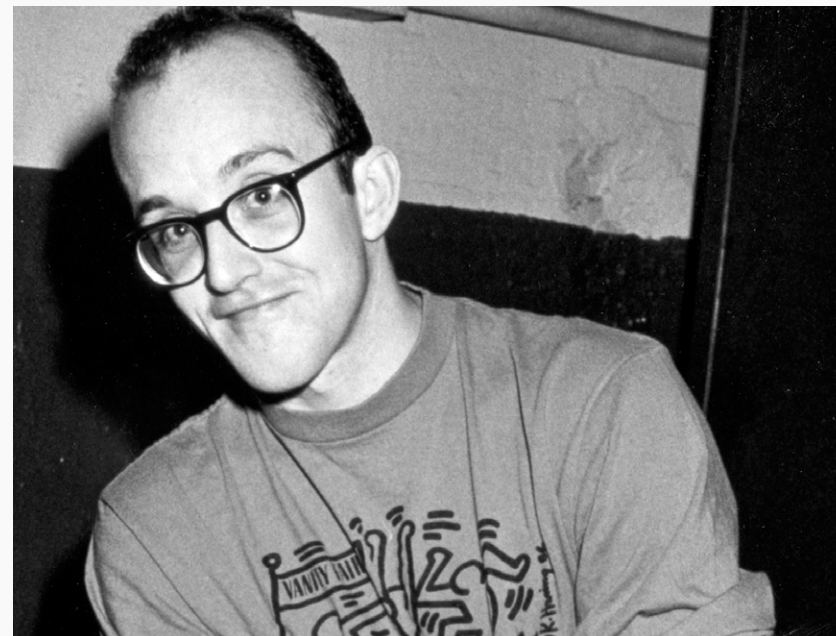
A 2224 35 23



A 2224 62 62



A 2224 75 46



## SANG BLEU

A 2234 01 01



## Vantage 3.0

SUMMER 24

COLLAB

### DESCRIPTION

Vantage is a neo-classic frame that serves a bold look for more daring styles. Each pair is handcrafted with Visottica Comotec hinges and crystal-clear Optical Class 1 lenses.

### FEATURES

- Eco-conscious acetate frame
- Optical Class 1 nylon lenses for clarity and durability
- 100% UVA/UVB protection
- Durable 5-barrel hinges with stainless steel temple cores for strength and flexibility

### SIZING

48 □ 25 - 145 / 147

A 2234 08 35



A 2234 16 46







## ESSENTIALS

The Essentials collection is AKILA's foundation, featuring modern reinterpretations of classic frames.

Phx wearing POMELO 2315 42 4X

A 1923 01 01



## Analogue

ESSENTIALS

### DESCRIPTION

Analogue revisits a vintage 1960s look that never goes out of style. Reworked for 2023 and beyond with a custom 8mm hand-crafted acetate, the frame is sculpted in a retro rectangular shape with 3-pin rivet temple detail that pays homage to timeless

### FEATURES

- Eco-conscious acetate frame
- Optical Class 1 nylon lenses for clarity and durability
- 100% UVA/UVB protection
- Durable 3-barrel hinges with stainless steel temple cores for strength and flexibility

### SIZING

50 □ 22 - 145 / 145

A 1923 68 43



A 1923 62 32



A 1923 94 86



# Apollo

A 1922 01 01



## DESCRIPTION

Apollo is a chunky frame with flat “zero base” lenses to fuse a classic era with the current wave, subtly refining a timeless silhouette.

## FEATURES

- Eco-conscious acetate frame
- Adjustable acetate nose pads
- Scratch-resistant Optical Class 1 nylon lenses for clarity
- 100% UVA/UVB protection
- Durable 7-barrel hinges with 2-pin rivets on temple and frame
- Stainless steel temple cores for strength and flexibility

## SIZING

45 □ 26 - 150 / 148

A 1922 01 78



A 1922 02 28



A 1922 77 01



A 1922 05 34



A 1922 75 32



A 1922 92 56



A 1922 96 94



# Ares

## DESCRIPTION

Ares brings a bolder look with downtown vibes and a subtle nod to Art Deco architecture. Its thick-framed construction features custom cores inside each temple inspired by DTLA's Eastern Columbia Building, and is finished with metal plaques at each hinge.

## FEATURES

- Eco-conscious acetate frame
- Scratch-resistant Optical Class 1 nylon lenses for clarity
- 100% UVA/UVB protection
- Durable 5-barrel hinges with 2-pin rivets on temple and frame
- Stainless steel temple cores for strength and flexibility

## SIZING

47 □ 23 - 145 / 144

A 2125 01 01



A 2125 01 56



A 2125 01 78



A 2125 92 94



A 2125 04 36



A 2125 79 35



A 2125 94 24



A 2125 94 86



## Ascent

### DESCRIPTION

Ascent is a classic look with versatile sensibilities. This square frame is finished with subtle details like triple-riveted ends and custom-engraved sunburst temple cores. Dress it up or down to fit your flow.

### FEATURES

- Eco-conscious acetate frame
- Scratch-resistant Optical Class 1 nylon lenses for clarity
- 100% UVA/UVB protection
- Durable 5-barrel hinges with 2-pin rivets on temple and frame
- Stainless steel temple cores for strength and flexibility

### SIZING

43 □ 24 - 145 / 140

A 2222 01 01



A 2222 01 26



A 2222 68 66



A 2222 13 56



A 2222 15 32



A 2222 94 86



# Aura

A 2308 01 01



## DESCRIPTION

Aura is a striking silhouette that combines a chunky 8mm thick frame with a classic square shape. These sunglasses can accentuate a bold personal style, or elevate a more grounded look.

## FEATURES

- Eco-conscious acetate frame
- Scratch-resistant Optical Class 1 nylon lenses for clarity
- 100% UVA/UVB protection
- Durable 5-barrel hinges with 2-pin rivets on temple and frame
- Stainless steel temple cores for strength and flexibility

## SIZING

49 □ 23 - 145 / 144

A 2308 13 78



A 2308 22 23



A 2308 32 32



A 2308 62 62



A 2308 94 56





# Big City

## DESCRIPTION

Big City features a slim rectangular design for a sleek, professional look. This frame is constructed with custom temple cores and completed with 3D-riveted plaques at each end.

## FEATURES

- Eco-conscious acetate frame
- Optical Class 1 nylon lenses for clarity and durability
- 100% UVA/UVB protection
- Durable 5-barrel hinges with stainless steel temple cores for strength and flexibility

## SIZING

48 □ 22 - 145 / 145

A 2209 01 01



A 2209 38 37



A 2209 24 38



A 2209 94 46



A 2209 53 01



A 2209 96 32



A 2209 98 94



# Dillinger

## DESCRIPTION

Dillinger is a metropolitan silhouette influenced by the Golden Age of pop art. Its 70s-inspired aviator shape is accented with custom temple cores and finished with 3-pin rivets for a unique but understated look.

## FEATURES

- Eco-conscious acetate frame
- Optical Class 1 nylon lenses for clarity and durability
- 100% UVA/UVB protection
- Durable 5-barrel hinges with stainless steel temple cores for strength and flexibility

## SIZING

49 □ 23 - 145 / 146

A 2211 01 01



A 2211 01 46



A 2211 02 86



A 2211 53 94



A 2211 98 01



A 2211 15 32



A 2211 66 66



A 2211 94 78





A 2203 01 01



A 2203 02 37



A 2203 98 05



A 2203 94 86



A 2203 97 44



# Eos

ESSENTIALS

## DESCRIPTION

Eos is an innovative art-inspired frame that blends street aesthetics with timeless minimalistic geometry. The bold, rectangular frame in 6 different colorways to suit any aesthetic.

## FEATURES

- Eco-conscious acetate frame
- Optical Class 1 nylon lenses for clarity and durability
- 100% UVA/UVB protection
- Durable 5-barrel hinges with stainless steel temple cores for strength and flexibility

## SIZING

47 □ 25 - 145 / 145

A 2203 01 56



A 2203 31 94



A 2409 01 01



## Hi-Fi

ESSENTIALS

### DESCRIPTION

Hi-Fi is AKILA's reimagining of a classic square-lens frame from a timeless era. Our latest version of Hi-Fi features two-pin rivets along the temple and frame for sturdier construction, and thicker acetate for all-around quality and comfort.

### FEATURES

- Eco-conscious acetate frame
- Optical Class 1 nylon lenses for clarity and durability
- 100% UVA/UVB protection
- Durable 5-barrel hinges with double 2-pin rivets and stainless steel temple cores

### SIZING

51 □ 21 - 148 / 148

A 2409 01 28



A 2409 01 56



A 2409 01 78



# Jubilee

A 2221 01 01



## DESCRIPTION

Jubilee blends a chunky frame into a contoured rectangular profile that pairs well with any style. It's finished with three rivets on each temple and custom-engraved sunburst temple cores.

## FEATURES

- Eco-conscious acetate frame
- Optical Class 1 nylon lenses for clarity and durability
- 100% UVA/UVB protection
- Durable 5-barrel hinges with stainless steel temple cores for strength and flexibility

## SIZING

50 □ 22 - 145 / 145

A 2221 62 09



A 2221 62 09



A 2221 31 09



A 2221 98 09



A 2221 98 09



# Kaya

## DESCRIPTION

Kaya is an understated frame influenced by 1940's Japanese style. Its slim build and round silhouette are reinforced with 2-pin riveted hinges for durability. A low-key winner with top-notch style.

## FEATURES

- Bio-acetate frame for eco-conscious durability
- Scratch-resistant Optical Class 1 nylon lenses for clarity
- 100% UVA/UVB protection
- Durable 5-barrel hinges with 2-pin rivets on temple and frame
- Stainless steel temple cores for strength and flexibility

## SIZING

44 □ 26 - 145 / 140

A 2126 01 01



A 2126 01 78



A 2126 02 28



A 2126 63 32



A 2126 07 67



A 2126 32 44



A 2126 76 06



A 2126 98 34



# Legacy

A 1904 01 01



## DESCRIPTION

Legacy mixes eyewear principles, fusing classic handcrafted artisanry with modern materials to create a timeless frame with an aesthetic functionality.

## FEATURES

- Bio-acetate frame for eco-conscious durability
- Scratch-resistant Optical Class 1 nylon lenses for clarity
- 100% UVA/UVB protection
- Durable 5-barrel hinges with 2-pin rivets on temple and frame
- Stainless steel temple cores for strength and flexibility

## SIZING

49 □ 21 - 151 / 148

A 1904 02 24



A 1904 02 78



A 1904 09 04



A 1904 08 38



A 1904 96 94



A 1904 92 56



# Lo-Fi

A 1904 01 01



## DESCRIPTION

Lo-Fi is a modern thin rectangular silhouette with sharp corners and a base zero nylon lens.

## FEATURES

- Bio-acetate frame for eco-conscious durability
- Scratch-resistant Optical Class 1 nylon lenses for clarity
- 100% UVA/UVB protection
- Durable 5-barrel hinges with 2-pin rivets on temple and frame
- Stainless steel temple cores for strength and flexibility

## SIZING

49 □ 21 - 145

A 1904 02 24



A 1904 96 31



A 1904 96 94



A 1904 09 04



A 1904 02 78



A 1904 92 55



A 1904 92 56



## Logos

### DESCRIPTION

Logos is a classic New York silhouette. The chunky modern frame and riveted temples give it a versatile aesthetic that pairs well with any look. Dress it up or keep it low-key - whichever fits your vibe.

### FEATURES

- Bio-acetate frame for eco-conscious durability
- Scratch-resistant Optical Class 1 nylon lenses for clarity
- 100% UVA/UVB protection
- Durable 5-barrel hinges with 2-pin rivets on temple and frame
- Stainless steel temple cores for strength and flexibility

### SIZING

46 □ 24 - 145 / 139

A 1921 01 01



A 1921 01 78



A 1921 04 37



A 1921 07 86



A 1921 08 24



A 1921 92 56



A 1921 94 14





# Lola

## DESCRIPTION

Lola is a modern look with subtle design quirks to be appreciated by detail-oriented observers. Built with extra thick acetate, Lola exudes contemporary vibes with flat-topped round frames, star-shaped rivets, and paddle-shaped temples.

## FEATURES

- Eco-conscious acetate frame
- Optical Class 1 nylon lenses for clarity and durability
- 100% UVA/UVB protection
- Durable 5-barrel hinges with stainless steel temple cores for strength and flexibility

## SIZING

43 □ 25 - 145 / 137

A 2210 01 01



A 2210 01 78



A 2210 94 86



A 2210 92 94



A 2210 94 43



A 2210 32 32



A 2210 98 46



A 2210 59 66





## Lucid

A 2307 01 01



### DESCRIPTION

Lucid is a versatile frame that covers many looks, from casual to professional. Its smart design features a round shape with 2-pin rivets at each end and extra-durable metal temple cores.

### FEATURES

- Eco-conscious acetate frame
- Optical Class 1 nylon lenses for clarity and durability
- 100% UVA/UVB protection
- Durable 5-barrel hinges with stainless steel temple cores for strength and flexibility

### SIZING

43 □ 28 - 145 / 140

A 2307 02 28



A 2307 08 37



A 2307 13 56



A 2307 66 66



A 2307 92 78



# Luna

A 2201 01 01



## DESCRIPTION

Luna is a classic retro shape with lenses set in a beveled-edged frame and diamond-shaped plaques at each temple and frame end. It's the perfect silhouette for year-round effortless style.

## FEATURES

- Eco-conscious acetate frame
- Optical Class 1 nylon lenses for clarity and durability
- 100% UVA/UVB protection
- Durable 5-barrel hinges with stainless steel temple cores for strength and flexibility

## SIZING

47 □ 25 - 145 / 145

A 2201 01 24



A 2201 06 94



A 2201 89 86



A 2201 92 66



A 2201 94 32



A 2201 01 78



A 2311 01 01



## Mabel

ESSENTIALS

### DESCRIPTION

Mabel is a luxurious silhouette inspired by the Golden Age of Hollywood. This frame blends classic cat-eye oval lenses with a contoured top and bold temples for a look that's equal parts playful and elegant.

### FEATURES

- Eco-conscious acetate frame
- Optical Class 1 nylon lenses for clarity and durability
- 100% UVA/UVB protection
- Durable 5-barrel hinges with stainless steel temple cores for strength and flexibility

### SIZING

46 □ 23 - 145 / 143

A 2311 09 01



A 2311 25 43



A 2311 98 86



A 2311 55 56



## Musa

### DESCRIPTION

Simply put: Musa looks good on everyone. Featuring a round and slightly slimmed down design, this versatile frame works well with any vibe. Finished with adjustable nose pads for a better fit and two-pin rivets for durability.

\*Our adaptive lenses are light responsive & seamlessly transition to a darker tint in the sun for easy day into nighttime wear.

### FEATURES

- Handmade eco-conscious acetate frame
- Optical Class 1 nylon lenses with anti-reflective coating
- 100% UVA/UVB protection
- Durable 5-barrel hinges with stainless steel temple cores for strength and flexibility

### SIZING

45 □ 25 - 145 / 140

A 2314 01 01



A 2314 92 56



A 2314 04 94



A 2314 94 9X\*



A 2314 08 4X\*



A 2314 61 3X\*



A 2007 01 01



## M.Y.C.

ESSENTIALS

### DESCRIPTION

M.Y.C. is an upscale silhouette with metropolitan vibes. These frames are constructed with acetate and stainless steel for durability, and finished with adjustable nose pads for long-wearing comfort.

### FEATURES

- Eco-conscious acetate temples
- Adjustable acetate nose pads
- 3-barrel hinges with stainless steel temple cores for strength and flexibility
- Optical Class 1 nylon lenses for clarity and durability
- 100% UVA/UVB protection

### SIZING

49 □ 21 - 150

A 2007 92 56



# Polaris

A 2202 01 01



## DESCRIPTION

Polaris is a versatile interpretation of flat-top frames that can be styled for a retro or futuristic look. Its bold silhouette is completed with wide temples and 3-pin rivets at each hinge for durability.

## FEATURES

- Eco-conscious acetate temples
- Adjustable acetate nose pads
- 3-barrel hinges with stainless steel temple cores for strength and flexibility
- Optical Class 1 nylon lenses for clarity and durability
- 100% UVA/UVB protection

## SIZING

51 □ 23 - 130 / 141

A 2202 01 78



A 2202 92 26



A 2202 04 94



A 2202 22 22



A 2202 94 66



# Pomelo

## DESCRIPTION

Pomelo brings a tastefully oversized look that has thrived across multiple eras. The frame is finished with low-key details like bevel-edged lenses, two-pin rivets, and custom temple cores.

\*Our adaptive lenses are light responsive & seamlessly transition to a darker tint in the sun for easy day into nighttime wear.

## FEATURES

- Eco-conscious acetate temples
- Optical Class 1 nylon lenses for clarity and durability
- 100% UVA/UVB protection
- Durable 5-barrel hinges with stainless steel temple cores for strength and flexibility

## SIZING

49 □ 23 - 145 / 144

A 2315 01 01



A 2315 22 96



A 2315 75 32



A 2315 89 9X\*



A 2315 42 4X\*



A 2315 91 3X\*



# Theory

A 1909 01 01



## DESCRIPTION

Theory blends art-fashion aesthetics with industrial influences. These sunglasses feature flat, flush-mount lenses encased in a metal / acetate combination frame for a design that's stylish and sturdy.

## FEATURES

- Eco-conscious acetate and stainless steel combination frame
- Adjustable acetate nose pads
- Double hinges with stainless steel temple cores for strength and flexibility
- Optical Class 1 nylon lenses for clarity and durability
- 100% UVA/UVB protection

## SIZING

48 □ 24 - 150

A 1909 01 78



A 1909 96 94



A 1909 01 24





A 2316 01 01



## Vera

ESSENTIALS

### DESCRIPTION

Vera is a versatile look with vintage vibes. This 70s-inspired frame features a large, rectangular design that's finished with custom temple cores for a subtle touch of individuality.

### FEATURES

- Eco-conscious acetate temples
- Optical Class 1 nylon lenses for clarity and durability
- 100% UVA/UVB protection
- Durable 5-barrel hinges with stainless steel temple cores for strength and flexibility

### SIZING

49 □ 23 - 145 / 144

A 2316 01 78



A 2316 08 22



## Vista

A 2309 01 01



### DESCRIPTION

Vista is a retro-inspired frame with minimalist undertones. Beveled rectangular frames with 2-pin star rivets give these glasses a polished look, and they're finished with metal temple cores for extra durability.

### FEATURES

- Eco-conscious acetate temples
- Optical Class 1 nylon lenses for clarity and durability
- 100% UVA/UVB protection
- Durable 5-barrel hinges with stainless steel temple cores for strength and flexibility

### SIZING

46 □ 27 - 145/142

A 2309 02 56



A 2309 15 64



A 2309 33 33



A 2309 79 26



A 2309 94 78



# Zed

## DESCRIPTION

Zed reanimates a retro look with modern proficiency. This classic So Cal frame features nylon lenses enclosed in sharp-beveled edges for a look that sits well with any vibe.

## FEATURES

- Eco-conscious acetate frame
- Optical Class 1 nylon lenses for clarity and durability
- 100% UVA/UVB protection
- Durable 5-barrel hinges with stainless steel temple cores for strength and flexibility

## SIZING

49 □ 21 - 145 / 140

A 1925 01 01



A 1925 01 78



A 1925 92 56



A 1925 04 24



A 1925 97 85



A 1925 94 36



A 1925 93 37





Phx wearing ORIEL 2324 01 9X

## **R+D**

Showcasing the latest releases from AKILA's creation lab featuring innovative and stylish designs meant to test the limits through advanced research and experimentation.

A 2219 01 01



## Achilles

ALUMINUM

R+D

### DESCRIPTION

Achilles is a rectangular frame finished with two rivets at each end. It features similar construction as Sentinel, but with a larger and “boxier” design for a bolder look.

### FEATURES

- Aluminum alloy frame with bio-acetate temples
- Adjustable bio-acetate nose pads
- 100% UVA/UVB protection to protect your eyes
- Stainless steel 3-barrel hinges with real rivets

### SIZING

51 □ 20 - 145 / 139

A 2219 01 32



A 2219 05 78



# Alias

A 2118 01 01



## DESCRIPTION

Alias is a modernized aviator with sleek refined curves reminiscent of a bygone era. The perfectly balanced style pairs teardrop lenses with a rounded acetate frame and comfortable wrap-around design perfect for showing up and showing out.

## FEATURES

- Eco-conscious acetate frame
- Optical Class 1 nylon lenses for clarity and durability
- 100% UVA/UVB protection
- Durable 5-barrel hinges with stainless steel temple cores for strength and flexibility

## SIZING

50 □ 22 - 130

A 2118 01 78



A 2118 94 01



A 2118 86 86



A 2118 92 26



A 2118 04 37



A 2118 94 14





# Apollo\_Inflated

INFLATED

R+D

A 2205 01 01



## DESCRIPTION

Our Inflated series reimagines classic AKILA frames using extra-thick cellulose acetate and a rounded finish to create “blown up” avant-garde silhouettes inspired by Austrian artist Erwin Wurm’s Fat Car sculptures.

## FEATURES

- Eco-conscious acetate frame
- Optical Class 1 nylon lenses for clarity and durability
- 100% UVA/UVB protection
- Durable 5-barrel hinges with stainless steel temple cores for strength and flexibility

## SIZING

43 □ 29 - 145 / 148

A 2205 54 01



A 2205 94 35



A 2205 98 22



A 2205 25 22



A 2205 58 66



A 2205 62 66



# Apollo\_Raw

RAW

R+D

A 1922 02 01 R



## DESCRIPTION

The AKILA RAW collection features raw unpolished acetate frames to reveal modern manufacturing artifacts and create a unique surface texture. This subtle textured finish gives each frame its own one-of-a-kind feel – no two pairs are identical.

Apollo is a chunky frame with flat “zero base” lenses to fuse a classic era with the current wave, subtly refining a timeless silhouette.

## FEATURES

- Eco-conscious acetate frame
- Optical Class 1 nylon lenses for clarity and durability
- 100% UVA/UVB protection
- Durable 5-barrel hinges with stainless steel temple cores for strength and flexibility

## SIZING

45 □ 26 – 150

A 1922 04 04 R



A 1922 15 32 R



A 1922 22 24 R



A 1922 85 93 R



A 1922 94 01 R



# Eazy

A 2134 01 01



## DESCRIPTION

Real G's know. Eazy is a legendary Los Angeles look that transformed worldwide style and culture forever. These frames feature a subtle wrap-around design and faithfully embody all the details of shades worn by the OG icon.

## FEATURES

- Eco-conscious acetate frame
- Optical Class 1 nylon lenses for clarity and durability
- 100% UVA/UVB protection
- Durable 5-barrel hinges with stainless steel temple cores for strength and flexibility

## SIZING

55 □ 21 - 130 / 138

A 2211 01 46



A 2211 02 86



A 2211 98 01



A 2211 15 32



A 2211 94 78



A 2206 01 01



## Jive\_Inflated

INFLATED

R+D

### DESCRIPTION

Our Inflated series reimagines classic AKILA frames using extra-thick cellulose acetate and a rounded finish to create “blown up” avant-garde silhouettes inspired by Austrian artist Erwin Wurm’s Fat Car sculptures.

### FEATURES

- Eco-conscious acetate frame
- Optical Class 1 nylon lenses for clarity and durability
- 100% UVA/UVB protection
- Durable 5-barrel hinges with stainless steel temple cores for strength and flexibility

### SIZING

44 □ 26 - 145 / 148

A 2206 54 01



A 2305 01 01



## Kaya\_Inflated

INFLATED

R+D

### DESCRIPTION

Our Inflated series reimagines classic AKILA frames using extra-thick cellulose acetate and a rounded finish to create “blown up” avant-garde silhouettes inspired by Austrian artist Erwin Wurm’s Fat Car sculptures.

### FEATURES

- Eco-conscious acetate frame
- Optical Class 1 nylon lenses for clarity and durability
- 100% UVA/UVB protection
- Durable 5-barrel hinges with stainless steel temple cores for strength and flexibility

### SIZING

44 □ 26 - 145 / 148

A 2305 01 01



A 2305 56 66



A 2305 94 01



A 2213 01 01



## Laguna

ALUMINUM

R+D

### DESCRIPTION

Laguna is a classic round frame with a larger circumference than Orchid, but retains similar construction for a look that can suit professional or casual styles.

### FEATURES

- Aluminum alloy frame with bio-acetate temples
- Adjustable bio-acetate nose pads
- 100% UVA/UVB protection to protect your eyes
- Stainless steel 3-barrel hinges with real rivets

### SIZING

49 □ 23 - 145 / 140

A 2213 01 01



A 2213 05 26



A 2213 02 78





# Legacy\_Raw

RAW

R+D

A 1904 04 04 R



## DESCRIPTION

The AKILA RAW collection features raw unpolished acetate frames to reveal modern manufacturing artifacts and create a unique surface texture. This subtle textured finish gives each frame its own one-of-a-kind feel – no two pairs are identical.

Legacy mixes eyewear principles, fusing classic handcrafted artisanry with modern materials to create a timeless frame with an aesthetic functionality.

## FEATURES

- Eco-conscious acetate frame
- Optical Class 1 nylon lenses for clarity and durability
- 100% UVA/UVB protection
- Durable 5-barrel hinges with stainless steel temple cores for strength and flexibility

## SIZING

49 □ 21 – 151

A 1904 22 22 R



A 1904 32 32 R



A 1904 52 52 R



A 1904 67 67 R



A 1904 93 01 R



A 2301 01 01



## Lucia

R+D

### DESCRIPTION

Lucia is inspired by classic rave culture and bold experimentation. These audacious frames feature a wraparound fit and oversized lenses for a look that favors both retro and avant-garde sensibilities.

### FEATURES

- Eco-conscious acetate frame
- Optical Class 1 nylon lenses for clarity and durability
- 100% UVA/UVB protection
- Durable 5-barrel hinges with stainless steel temple cores for strength and flexibility

### SIZING

57 □ 23 - 120 / 141

A 2301 01 78



A 2301 68 94



A 2301 94 34



A 2217 01 01



## Orchid

ALUMINUM

R+D

### DESCRIPTION

Orchid is a classic round frame with cellulose nose pads and two rivets at each end to ensure comfort and durability. It features similar design but a smaller circumference than Laguna, for a more low-key look.

### FEATURES

- Aluminum alloy frame with bio-acetate temples
- Adjustable bio-acetate nose pads
- 100% UVA/UVB protection to protect your eyes
- Stainless steel 3-barrel hinges with real rivets

### SIZING

45 □ 23 - 145 /128

A 2217 01 35



A 2217 05 26



A 2324 01 9X\*



## Oriel

ALUMINUM

R+D

### DESCRIPTION

Oriel is a classic round frame with subtle flair. Its minimalist look is reinforced with aluminum construction, adjustable nose pads, and two-pinned rivets for a more resilient design.

\*Our adaptive lenses are light responsive & seamlessly transition to a darker tint in the sun for easy day into nighttime wear.

### FEATURES

- Aluminum alloy frame with bio-acetate temples
- Adjustable bio-acetate nose pads
- 100% UVA/UVB protection to protect your eyes
- Stainless steel 5-barrel hinges with real rivets

### SIZING

47 □ 23 - 145 /137

A 2324 01 3X\*



A 2324 05 4X\*



# Paradox

A 2204 01 01



## DESCRIPTION

Paradox embodies confidence, emphasized by its sharp geometric design and angular silhouette. These frames are finished with custom engraving on each temple core to solidify their bold architectural identity.

## FEATURES

- Eco-conscious acetate frame
- Optical Class 1 nylon lenses for clarity and durability
- 100% UVA/UVB protection
- Durable 5-barrel hinges with stainless steel temple cores for strength and flexibility

## SIZING

49 □ 24 - 145 / 145

A 2204 24 24



A 2204 35 94



A 2204 98 44



A 2204 55 01



A 2204 97 94



A 2204 01 36



A 2204 97 96



A 2220 01 01



# Phantom

ALUMINUM

R+D

## DESCRIPTION

Phantom is an aviator-style frame with subtle angles and reinforced construction for long-lasting durability. These sunglasses are versatile, and can complement a variety of looks.

## FEATURES

- Aluminum alloy frame with bio-acetate temples
- Adjustable bio-acetate nose pads
- 100% UVA/UVB protection to protect your eyes
- Stainless steel 3-barrel hinges with real rivets

## SIZING

53 □ 21 - 145 /149

A 2220 01 78



A 2220 05 05





A 2212 01 01



## Sentinel

ALUMINUM

R+D

### DESCRIPTION

Sentinel is a sleek rectangular frame for fans of AKILA's Big City sunglasses. Their design is similar to Achilles from the Aluminum Collection, with smaller dimensions for a more subtle look.

### FEATURES

- Aluminum alloy frame with bio-acetate temples
- Adjustable bio-acetate nose pads
- 100% UVA/UVB protection to protect your eyes
- Stainless steel 3-barrel hinges with real rivets

### SIZING

48 □ 20 - 145 /135

A 2212 01 56



A 2212 05 46



A 1908 01 01



## Vector

R+D

### DESCRIPTION

Vector is a design that is engineered for attention. Bold colorways on a contemporary cat-eye frame make this a choice for only the most daring looks.

### FEATURES

- Eco-conscious acetate frame
- Optical Class 1 nylon lenses for clarity and durability
- 100% UVA/UVB protection
- Durable 5-barrel hinges with stainless steel temple cores for strength and flexibility=

### SIZING

49 □ 24 - 145 / 145

A 1908 55 01



A 1908 91 56



A 1908 97 86



A 1908 95 28



A 2130 01 01



## Verve

R+D

### DESCRIPTION

Verve features a bevel-edged rectangular frame and sunken lenses to create a bold silhouette with versatile aesthetics.

### FEATURES

- Eco-conscious acetate frame
- Optical Class 1 nylon lenses for clarity and durability
- 100% UVA/UVB protection
- Durable 5-barrel hinges with stainless steel temple cores for strength and flexibility=

### SIZING

54 □ 20 - 145 / 146

A 12130 02 56



A 2130 09 01



A 2130 79 94



A 2130 32 32



A 2130 92 78



A 2130 93 01



A 2306 01 01



## Verve\_Inflated

INFLATED

R+D

### DESCRIPTION

Our Inflated series reimagines classic AKILA frames using extra-thick cellulose acetate and a rounded finish to create “blown up” avant-garde silhouettes inspired by Austrian artist Erwin Wurm’s Fat Car sculptures.

Verve features a bevel-edged rectangular frame and sunken lenses to create a bold silhouette with versatile aesthetics.

### FEATURES

- Eco-conscious acetate frame
- Optical Class 1 nylon lenses for clarity and durability
- 100% UVA/UVB protection
- Durable 5-barrel hinges with stainless steel temple cores for strength and flexibility=

### SIZING

49 □ 29 - 145 / 149

A 2306 47 66



A 2306 62 66



A 2306 94 01



# Zed\_Raw

RAW

R+D

A 1925 94 94 R



## DESCRIPTION

The AKILA RAW collection features raw unpolished acetate frames to reveal modern manufacturing artifacts and create a unique surface texture. This subtle textured finish gives each frame its own one-of-a-kind feel - no two pairs are identical.

Zed is a classic wraparound frame that retains a retro look with modern nylon lenses enclosed in a drastic bevel that looks good on any face shape.

## FEATURES

- Eco-conscious acetate frame
- Optical Class 1 nylon lenses for clarity and durability
- 100% UVA/UVB protection
- Durable 5-barrel hinges with stainless steel temple cores for strength and flexibility

## SIZING

49 □ 21 - 145

A 1925 28 28 R



A 1925 36 36 R



A 1925 78 78 R



A 1925 67 97 R



A 1925 93 01 R





## **COLLABORATIONS**

We partner with friends, artists and brands we admire for their modern sensibilities to bring new ideas to market.

By being inclusive rather than exclusive our goal is to give design power back to independent brands and in turn bringing better value to consumers.



**afield out**

A 1922 01 35 A



A 1922 01 35 A



## Apollo

COLLAB

### DESCRIPTION

AKILA teams up with Afield Out, a Santa Ana outdoor apparel meets streetwear brand dressing a new generation of outdoors heads - one that isn't so easily defined by what they wear.

### FEATURES

- Eco-conscious acetate frame
- Optical Class 1 nylon lenses for clarity and durability
- 100% UVA/UVB protection
- Durable 5-barrel hinges with stainless steel temple cores for strength and flexibility

### SIZING

45 □ 26 - 150 /148



THE  
BEATLES

A 2302 01 01 B



A 1929 05 24



A 1929 92 32



A 1929 05 24



A 1929 92 32



## A Side, B Side

COLLAB

### DESCRIPTION

The officially licensed AKILA x Beatles collection features A-Side and B-Side, two frames inspired by the iconic look of the born Liverpoolers. Both designs pay homage to The Beatles' classic aesthetic while faithfully reimagining it with modern sensibilities. Each set of sunglasses is crafted with a Pepperland color palette and arrives in custom-designed Yellow Submarine packaging.

### FEATURES

- Eco-conscious acetate frame
- Optical Class 1 nylon lenses for clarity and durability
- 100% UVA/UVB protection
- Durable 5-barrel hinges with stainless steel temple cores for strength and flexibility

### SIZING

45 □ 26 - 150 / 148

46 □ 24 - 145 / 139



**BRICKS  
& WOOD**

A 2021 01 01



## Halldale

COLLAB

### DESCRIPTION

LA-based apparel brand Bricks & Wood shares our spirit of focusing on quality – even if that means producing lower quantities. That’s why we linked up to create Halldale, a vintage-inspired frame made in very limited numbers to ensure top craftsmanship.

### FEATURES

- Eco-conscious acetate frame
- Optical Class 1 nylon lenses for clarity and durability
- 100% UVA/UVB protection
- Durable 7-barrel hinges with stainless steel temple cores for strength and flexibility

### SIZING

53 □ 17 – 145



## CHARLI COHEN

A 2012 01 15



2012 31 35



A 2306 62 66



## Halo

COLLAB

### DESCRIPTION

We've joined forces with London-based techwear designer Charli Cohen to create Halo. This frame boasts a future industrial silhouette with ergonomic comfort. Featuring a wrap-around shape, all pairs include a fire chain retainer which can be attached to metal eyelets on each temple or worn separately.

### FEATURES

- Eco-conscious acetate frame
- Optical Class 1 nylon lenses for clarity and durability
- 100% UVA/UVB protection
- Durable 5-barrel hinges with stainless steel temple cores for strength and flexibility=

### SIZING

49 □ 29 - 145 / 149





# DEVÁSTATES

A 1922 28 01 D



# Apollo

COLLAB

## DESCRIPTION

Launched in Indonesia by friends Theo Kusuma and Mol Edrin, streetwear brand Devá States has expanded worldwide with its clever mashup of Jakarta street style, arresting typography, and dystopian sci-fi themes.

## FEATURES

- Eco-conscious acetate frame
- Optical Class 1 nylon lenses for clarity and durability
- 100% UVA/UVB protection
- Durable 5-barrel hinges with stainless steel temple cores for strength and flexibility

## SIZING

45 □ 26 - 150 / 148



EXCHANGE  
PROGRAM

A 2313 01 01 E



## Lizza

COLLAB

### DESCRIPTION

Lizza is a collaborative frame between AKILA and Exchange Program that draws inspiration from a worldwide amalgam of modern style and architectural design. Lizza features oversized lenses in a contoured frame, finished with an embossed Exchange Program globe logo lens on each temple.

### FEATURES

- Eco-conscious acetate frame
- Optical Class 1 nylon lenses for clarity and durability
- 100% UVA/UVB protection
- Durable 5-barrel hinges with stainless steel temple cores for strength and flexibility

### SIZING

46 □ 26 - 150 / 148

2012 31 35



A 2306 62 66



Freddie

A 2103 15 94 FG



A 2103 67 67 FG



## Vertigo

COLLAB

### DESCRIPTION

“A lot of shit it broke my heart, but it fixed my vision.” AKILA linked with Freddie Gibbs to cook up Vertigo, a bold frame with old-school luxury vibes and gold-colored temple plates handpicked by Big Boss Rabbit himself. Vertigo is a universally flattering style oozing with confidence with a strikingly curvy and narrow shape.

### FEATURES

- Acetate frame with custom metal Rabbit Vision temple hardware
- Optical Class 1 nylon lenses for clarity and durability
- 100% UVA/UVB protection
- Durable 5-barrel hinges with stainless steel temple cores for strength and flexibility

### SIZING

51 □ 22 - 135 / 140







A 2304 01 01 J



## Tourist

COLLAB

### DESCRIPTION

Tourist is a collaboration with Jungles Jungles, an Australian-based streetwear brand focused on 1970s counterculture. These oversized “bug eye” sunglasses are reminiscent of vintage mod style, with a wraparound fit, toric lenses, and typographic details along the perimeter of the frame.

### FEATURES

- Eco-conscious acetate frame
- Optical Class 1 nylon lenses with indigo AR coating for clarity and durability
- 100% UVA/UVB protection
- Durable 5-barrel hinges with stainless steel temple cores for strength and flexibility

### SIZING

56 □ 25 - 125 / 142

A 2304 01 56 J



A 2304 09 56 J





A 2125 01 01 GD



A 2125 93 32 GD



## Ares

COLLAB

### DESCRIPTION

We collaborated with the Grateful Dead to launch their inaugural sunglasses collection, featuring two sets inspired by the band's iconic style. Our Ares frame, a bold favorite, is redesigned with 13-point lightning bolts at each frame end and Steal Your Face skull plaques on the hinges.

### FEATURES

- Eco-conscious acetate frame
- Custom-detailed cores on inner temples
- Optical Class 1 nylon lenses for clarity and durability
- 100% UVA/UVB protection
- Custom internal hinge hardware

### SIZING

47 □ 23 - 145 /144





A 2126 01 3X GD



Light adaptive lenses: Light to dark



## Kaya

COLLAB

### DESCRIPTION

Our newest Grateful Dead sunglasses feature light adaptive lenses that transition from dark to light as your day drifts into night. Kaya is a slim, round frame reinforced with 2-pin riveted hinges for durability. Each pair is finished off with custom Dead-themed temple cores & adjustable acetate nose-pads.

### FEATURES

- UV reactive Light-Adaptive lenses that transition from light to dark in the sun
- Eco-conscious acetate frame
- Optical Class 1 nylon lenses for clarity and durability
- 100% UVA/UVB protection
- 2-pin riveted 5-barrel hinges for durability

### SIZING

44 □ 26 - 145 /140





# KkCo

A 2313 36 32 K



A 2103 67 67 FG



# Lizard

COLLAB

## DESCRIPTION

Lizard is both brands' reinvention of a traditional sports frame, putting a fresh twist with unexpected colors on a longtime favorite style. The frames are influenced by vintage fly fishing sunglasses, featuring a lightweight and curved wraparound design punctuated with polarized lenses, custom-drilled eyelets, and KkCo's trademark piercing detail through the left temple.

## FEATURES

- Eco-conscious acetate frame
- Optical Class 1 nylon lenses for clarity and durability
- 100% UVA/UVB protection
- Durable 5-barrel hinges with stainless steel temple cores for strength and flexibility

## SIZING

57 □ 17 - 122 / 137



Malbon

A 2129 68 33



## Heritage

COLLAB

### DESCRIPTION

Heritage is a collaboration between AKILA and LA-based lifestyle brand Malbon Golf. This frame features a classic, versatile shape accented with golf tee hardware at each end - perfect for the links or everyday wear.

### FEATURES

- Bio-acetate frame for eco-conscious durability and comfort
- Scratch-resistant Optical Class 1 nylon lenses for clarity
- 100% UVA/UVB protection
- Durable 5-barrel hinges with stainless steel temple cores for strength and flexibility

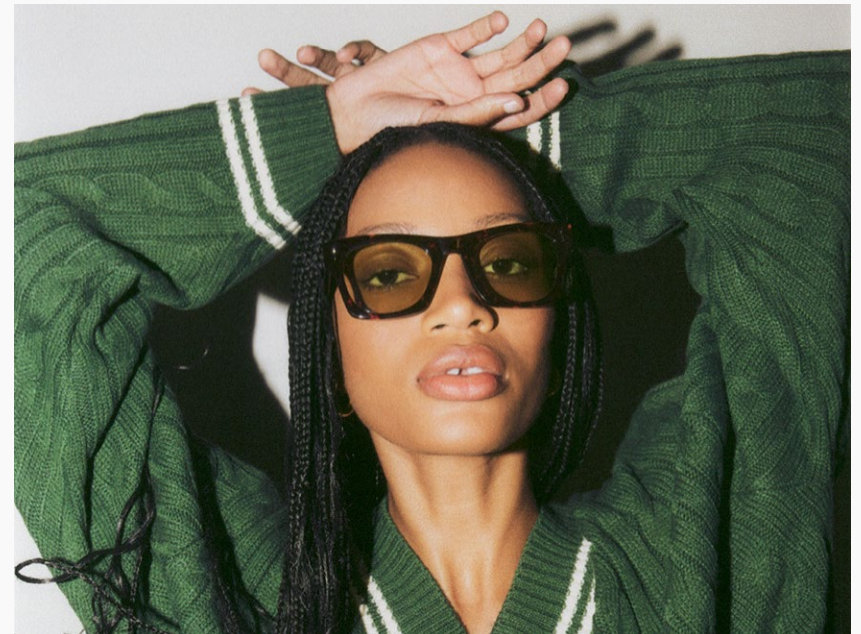
### SIZING

53 □ 22 - 145 /146

A 2212 01 56



A 2212 05 46



mister green®

A 2003 94 01 MG



## Lo-Fi, Philosophy

COLLAB

### DESCRIPTION

These lenses are designed to cover the natural color of the eyes, making the redness less noticeable. Mister Green is a progressive California lifestyle brand based in Los Angeles, California, established in 2015. We are proud to work with people around the world making unique, quality products that exist in a class to themselves.

### FEATURES

- Handmade in Japan
- Eco-friendly cellulose acetate frame
- Optical Class 1 nylon lenses with AR coating for clarity
- 100% UVA / UVB protection
- 5-Barrel hinges with akulon-coated screws for durability

### SIZING

49 □ 21 - 145 / 148

52 □ 18 - 145

A 2003 86 56 MG



A 2108 92 56 MG







A 2221 01 85 L



A 2221 01 55 H



A 2221 55 01 B



A 2221 02 25 K



A 2221 35 35 C



A 2221 25 25 W



## Jubilee

COLLAB

### DESCRIPTION

Rep your squad with AKILA's officially licensed NBA frames. Jubilee blends streetwise looks into a contoured rectangular frame that pairs well with any style. All sunglasses in the NBA Collection are finished with team colors, team logo plaques at each temple and come with custom team packaging.

### FEATURES

- Eco-conscious acetate frame
- Optical Class 1 nylon lenses for clarity and durability
- 100% UVA/UVB protection
- Durable custom plaque hinges with stainless steel temple cores for strength and flexibility

### SIZING

50 □ 22 - 145 / 145





POLITE WORLDWIDE

A 2031 01 01 P



## Terra

COLLAB

### DESCRIPTION

Terra is our collaboration with Polite Worldwide, a like-minded eco-conscious brand from LA. Together, we've created a frame that's made with bio-acetate derived from sustainable wood and cotton pulp instead of petroleum-based plastics.

### FEATURES

- Eco-conscious acetate frame
- Optical Class 1 nylon lenses for clarity and durability
- 100% UVA/UVB protection
- Durable 7-barrel hinges with stainless steel temple cores for strength and flexibility

### SIZING

55 □ 19 - 145 / 144





A 2301 01 24 R



A 2301 07 78 R



## Lucia

COLLAB

### DESCRIPTION

Lucia is a collaborative frame from AKILA and Los Angeles streetwear brand ROYAL.2. Drawing from ROYAL.2's bold attitude and AKILA's design expertise, these sunglasses feature a wraparound fit and ROYAL.2's trademark black cat along each temple.

### FEATURES

- Bio-acetate frame for eco-conscious durability and comfort
- Scratch-resistant Optical Class 1 nylon lenses for clarity
- 100% UVA/UVB protection
- Durable 5-barrel hinges with stainless steel temple cores for strength and flexibility

### SIZING

57 □ 23 - 120 /141



s.k. manor hill

A 1925 35 35 SK



## Zed

COLLAB

### DESCRIPTION

Zed reanimates a retro look with modern proficiency. This classic So Cal frame features nylon lenses enclosed in sharp-beveled edges for a look that sits well with any vibe.

### FEATURES

- Bio-acetate frame for eco-conscious durability
- Optical Class 1 nylon lenses for clarity and durability
- 100% UVA/UVB protection
- Durable 5-barrel hinges with stainless steel temple cores for strength and flexibility

### SIZING

49 □ 21 - 145 / 140



**SOTO**  
WORLDWIDE

A 2230 06 28 S



## Verve

COLLAB

### DESCRIPTION

The third edition of AKILA and Soto's Verve sunglasses feature rhinestone gems on each temple of a bevel-edged rectangular frame. The collaborative frames embody AKILA's reputable design fundamentals and Soto's distinct aesthetic from her extensive artwork and highly sought-after product releases.

### FEATURES

- Bio-acetate frame for eco-conscious durability and comfort
- Scratch-resistant Optical Class 1 nylon lenses for clarity
- 100% UVA/UVB protection
- Durable 5-barrel hinges with stainless steel temple cores for strength and flexibility

### SIZING

53 □ 22 - 145 /146

A 2230 98 97 S







Helena wearing POLEMO 2315 42 4X

## Showrooms

### LOS ANGELES

Chris Mart  
chris@akila.la

### NEW YORK

Brett Taylor  
brett@akila.la

### TOKYO

Hiroshi Makino  
hm@a-enltd.com

### LONDON

Rufus Abbott  
rufus@thegoodsagency.com

### MILAN

Stay True  
sales@staytruedistribution.com

100% UVA/UVB BLOCKING



HAND FINISHED

*Akila*

Los Angeles, CA

USPTO 87936882  
FDA 3014539734  
DEVICE D340589

WWW.AKILA.LA  
@AKILA.LA