

A K I L A



AKILA is an independent eyewear brand from Los Angeles focused on handmade, limited-run eyewear.

We are advocates of sustainability and craft our eyewear from eco-friendly acetate, plant-based lenses, and biodegradable packaging. Style and sustainability can coexist.

RESPECT THE SUN™

AKILA

COMING SOON

ESSENTIALS

ALUMINUM OPTICAL

COLLABORATIONS

5 - 13

15 - 47

49 - 59

61 - 65



An independent frame of mind.

AKILA is beholden to no one. We exercise complete independence in what we create and who we collaborate with, to bring you the best eyewear possible.

Size Guide

00 □ 00 - 000 / 000

—————▶ LENS □ BRIDGE - TEMPLE / FRAME

COMING SOON

See what's on the horizon from AKILA, including new seasonal collections and collaborations.

V 2401 01 09



Era

SPRING 24

ESSENTIALS

DESCRIPTION

Era is a distinct look that can be dressed up boldly or worn casually for more lowkey vibes. The frame features a subtle hexagon shape, and is finished with two-pin rivets and custom-engraved temple cores.

FEATURES

- Eco-conscious acetate frame
- Optical Class 1 nylon lenses for clarity and durability
- 100% UVA/UVB protection
- Durable 5-barrel hinges with stainless steel temple cores for strength and flexibility

SIZING

46 □ 22 - 145 / 141

V 2401 96 09



V 2401 08 09



V 2401 24 09



V 2402 01 09



Syndicate

SPRING 24

ESSENTIALS

DESCRIPTION

Syndicate is a classic rectangular design with subtle details for a more discerning look. This versatile frame is finished with triple-riveted ends and custom-engraved temple cores.

FEATURES

- Eco-conscious acetate frame
- Optical Class 1 nylon lenses for clarity and durability
- 100% UVA/UVB protection
- Durable 5-barrel hinges with stainless steel temple cores for strength and flexibility

SIZING

48 □ 25 - 145 / 147

V 2402 92 09



V 2402 85 09



THE
BEATLES

V 2413 01 09 B



V 2413 69 09 B



Blackbird

SUMMER 24

COLLAB

DESCRIPTION

Blackbird is a frame inspired by the iconic look of the born Liverpoolers, paying homage to The Beatles' classic aesthetic while faithfully reimagining it with modern sensibilities

FEATURES

- Eco-conscious acetate frame
- Optical Class 1 nylon lenses for clarity and durability
- 100% UVA/UVB protection
- Durable 5-barrel hinges with stainless steel temple cores for strength and flexibility

SIZING

48 □ 23 - 135 / 148



Keith Haring

V 2402 01 09



Club 57

SUMMER 24

COLLAB

DESCRIPTION

Pop artist Keith Haring was known for his iconic work and distinct personal style. "Art is for everybody" was his motto – and these sunglasses live up to that philosophy.

FEATURES

- Eco-conscious acetate frame
- Optical Class 1 nylon lenses for clarity and durability
- 100% UVA/UVB protection
- Durable 5-barrel hinges with stainless steel temple cores for strength and flexibility

SIZING

48 □ 25 – 145 / 147

V 2402 92 09



V 2402 85 09





ESSENTIALS

The Essentials collection is AKILA's foundation, featuring modern reinterpretations of classic frames.

Satchid wearing VERA 2316 14 09

V 2222 01 09



Ascent

ESSENTIALS

DESCRIPTION

Ascent is a classic look with versatile sensibilities. This square frame is finished with subtle details like triple-riveted ends and custom-engraved sunburst temple cores. Dress it up or down to fit your flow.

FEATURES

- Eco-conscious acetate frame
- Optical Class 1 nylon lenses for clarity and durability
- 100% UVA/UVB protection
- Durable 5-barrel hinges with stainless steel temple cores for strength and flexibility

SIZING

44 □ 25 - 145 / 140

V 2222 26 09



V 2222 96 09



V 2222 97 09



V 1901 01 09



Atelier

ESSENTIALS

DESCRIPTION

Atelier is a California contemporary design that pairs perfectly with any style. This versatile frame is the latest addition to our Essentials collection, continuing the AKILA tradition of revisiting classic looks through a modern lens.

FEATURES

- Eco-conscious acetate frame
- Optical Class 1 nylon lenses for clarity and durability
- 100% UVA/UVB protection
- Durable 3-barrel hinges with stainless steel temple cores for strength and flexibility

SIZING

47 □ 22 - 145 / 135

V 1901 92 09



V 1901 09 09



Apollo

DESCRIPTION

Apollo is a chunky frame with flat “zero base” lenses to fuse a classic era with the current wave, subtly refining a timeless silhouette.

FEATURES

- Eco-conscious acetate frame
- Adjustable acetate nose pads
- Scratch-resistant Optical Class 1 nylon lenses for clarity
- 100% UVA/UVB protection
- Durable 7-barrel hinges with 2-pin rivets on temple and frame
- Stainless steel temple cores for strength and flexibility

SIZING

45 □ 26 – 150 / 148

V 1922 01 09



V 1922 77 01



V 1922 05 09



V 1922 92 56



V 1922 75 32



V 1922 96 94



V 1922 01 09



Big City

ESSENTIALS

DESCRIPTION

Big City features a slim rectangular design for a sleek, professional look. This frame is constructed with custom temple cores and completed with 3D-riveted plaques at each end.

FEATURES

- Eco-conscious acetate frame
- Optical Class 1 nylon lenses for clarity and durability
- 100% UVA/UVB protection
- Durable 5-barrel hinges with stainless steel temple cores for strength and flexibility

SIZING

48 □ 22 - 145 / 145

V 2209 96 09



V 2209 97 09



V 2209 22 09



V 2020 01 09



Hi-Fi

ESSENTIALS

DESCRIPTION

Hi-Fi is AKILA's reimagining of a classic square-lens frame from a timeless era. Our latest version of Hi-Fi features two-pin rivets along the temple and frame for sturdier construction, and thicker acetate for all-around quality and comfort.

FEATURES

- Eco-conscious acetate frame
- Optical Class 1 nylon lenses for clarity and durability
- 100% UVA/UVB protection
- Durable 5-barrel hinges with double 2-pin rivets and stainless steel temple cores

SIZING

51 □ 21 - 148 / 148

V 2020 92 09



V 2409 97 09



V 2221 01 09



Jubilee

ESSENTIALS

DESCRIPTION

Jubilee blends a chunky frame into a contoured rectangular profile that pairs well with any style. It's finished with three rivets on each temple and custom-engraved sunburst temple cores.

FEATURES

- Eco-conscious acetate frame
- Optical Class 1 nylon lenses for clarity and durability
- 100% UVA/UVB protection
- Durable 5-barrel hinges with stainless steel temple cores for strength and flexibility

SIZING

50 □ 22 - 145 / 145

V 2221 62 09



V 2221 31 09



V 2221 98 09



Kaya

DESCRIPTION

Kaya is an understated frame influenced by 1940's Japanese style. Its slim build and round silhouette are reinforced with 2-pin riveted hinges for durability. A low-key winner with top-notch style.

FEATURES

- Bio-acetate frame for eco-conscious durability
- Scratch-resistant Optical Class 1 nylon lenses for clarity
- 100% UVA/UVB protection
- Durable 5-barrel hinges with 2-pin rivets on temple and frame
- Stainless steel temple cores for strength and flexibility

SIZING

44 □ 26 - 145 / 140

V 2126 01 09



V 2126 94 09



V 2126 98 09



V 2126 28 09



V 2126 76 09



V 2126 55 09



Legacy

V 1904 01 09



DESCRIPTION

Legacy mixes eyewear principles, fusing classic handcrafted artisanry with modern materials to create a timeless frame with an aesthetic functionality.

FEATURES

- Bio-acetate frame for eco-conscious durability
- Scratch-resistant Optical Class 1 nylon lenses for clarity
- 100% UVA/UVB protection
- Durable 5-barrel hinges with 2-pin rivets on temple and frame
- Stainless steel temple cores for strength and flexibility

SIZING

49 □ 21 - 151 / 148

V 1904 96 09



V 1904 08 09



Logos

DESCRIPTION

Logos is a classic New York silhouette. The chunky modern frame and riveted temples give it a versatile aesthetic that pairs well with any look. Dress it up or keep it low-key - whichever fits your vibe.

FEATURES

- Bio-acetate frame for eco-conscious durability
- Scratch-resistant Optical Class 1 nylon lenses for clarity
- 100% UVA/UVB protection
- Durable 5-barrel hinges with 2-pin rivets on temple and frame
- Stainless steel temple cores for strength and flexibility

SIZING

46 □ 24 - 145 / 139

V 1921 07 09



V 1921 94 09



V 1921 94 09



V 1921 09 09



V 1921 76 09



V 1921 21 09



V 2210 01 09



Lola

ESSENTIALS

DESCRIPTION

Lola is a modern look with subtle design quirks to be appreciated by detail-oriented observers. Built with extra thick acetate, Lola exudes contemporary vibes with flat-topped round frames, star-shaped rivets, and paddle-shaped temples.

FEATURES

- Eco-conscious acetate frame
- Optical Class 1 nylon lenses for clarity and durability
- 100% UVA/UVB protection
- Durable 5-barrel hinges with stainless steel temple cores for strength and flexibility

SIZING

43 □ 25 - 145 / 137

V 2210 96 09



V 2210 94 09



V 2210 98 09



V 2201 04 09



Luna

ESSENTIALS

DESCRIPTION

Luna is a classic retro shape with lenses set in a beveled-edged frame and diamond-shaped plaques at each temple and frame end. It's the perfect silhouette for year-round effortless style.

FEATURES

- Eco-conscious acetate frame
- Optical Class 1 nylon lenses for clarity and durability
- 100% UVA/UVB protection
- Durable 5-barrel hinges with stainless steel temple cores for strength and flexibility

SIZING

47 □ 25 - 145 / 145

V 2201 94 09



V 2201 08 09



V 2201 97 09



V 2314 01 09



Musa

ESSENTIALS

DESCRIPTION

Simply put: Musa looks good on everyone. Featuring a round and slightly slimmed down design, this versatile frame works well with any vibe. Finished with adjustable nose pads for a better fit and two-pin rivets for durability.

FEATURES

- Eco-conscious acetate temples
- Adjustable acetate nose pads
- Optical Class 1 nylon lenses for clarity and durability
- 100% UVA/UVB protection

SIZING

45 □ 25 - 145 /140

V 2314 91 09



V 2314 66 09



V 2314 69 09



V 2315 01 09



Pomelo

ESSENTIALS

DESCRIPTION

Pomelo brings a tastefully oversized look that has thrived across multiple eras. The frame is finished with low-key details like bevel-edged lenses, two-pin rivets, and custom temple cores.

Our adaptive lenses are light responsive & seamlessly transition to a darker tint in the sun for easy day into nighttime wear.

FEATURES

- Eco-conscious acetate temples
- Optical Class 1 nylon lenses for clarity and durability
- 100% UVA/UVB protection
- Durable 5-barrel hinges with stainless steel temple cores for strength and flexibility

SIZING

49 □ 23 - 145 /144

V 2315 15 09



V 2315 34 09



V 2315 59 09



V 2316 01 09



Vera

ESSENTIALS

DESCRIPTION

Vera is a versatile look with vintage vibes. This 70s-inspired frame features a large, rectangular design that's finished with custom temple cores for a subtle touch of individuality.

FEATURES

- Eco-conscious acetate temples
- Optical Class 1 nylon lenses for clarity and durability
- 100% UVA/UVB protection
- Durable 5-barrel hinges with stainless steel temple cores for strength and flexibility

SIZING

49 □ 23 - 145 / 144

V 2316 22 09



V 2316 14 09



V 2316 69 09



V 2309 01 09



Vista

ESSENTIALS

DESCRIPTION

Vista is a retro-inspired frame with minimalist undertones. Beveled rectangular frames with 2-pin star rivets give these glasses a polished look, and they're finished with metal temple cores for extra durability.

FEATURES

- Eco-conscious acetate temples
- Optical Class 1 nylon lenses for clarity and durability
- 100% UVA/UVB protection
- Durable 5-barrel hinges with stainless steel temple cores for strength and flexibility

SIZING

46 □ 27 - 145 / 142

V 2309 92 09



V 2309 52 09



V 2309 69 09



V 1925 01 09



Zed

ESSENTIALS

DESCRIPTION

Zed reanimates a retro look with modern proficiency. This classic So Cal frame features nylon lenses enclosed in sharp-beveled edges for a look that sits well with any vibe.

FEATURES

- Eco-conscious acetate frame
- Optical Class 1 nylon lenses for clarity and durability
- 100% UVA/UVB protection
- Durable 5-barrel hinges with stainless steel temple cores for strength and flexibility

SIZING

49 □ 21 - 145 / 140

V 1925 16 09



V 1925 09 09



V 1925 33 09





ALUMINUM OPTICAL

AKILA's Aluminum Collection features understated styles constructed from lightweight aluminum. Each frame embodies a minimalist look with a matte finish.

AKILA Optical glasses come stock with clear, blue-light-blocking lenses to protect against eye strain and headaches from digital screens.

V 2219 05 09



Achilles

ALUMINUM

DESCRIPTION

Achilles is a rectangular frame finished with two rivets at each end. It features similar construction as Sentinel, but with a larger and “boxier” design for a bolder look.

FEATURES

- Aluminum alloy frame with bio-acetate temples
- Adjustable bio-acetate nose pads
- 100% UVA/UVB protection to protect your eyes
- Stainless steel 3-barrel hinges with real rivets

SIZING

51 □ 20 - 145 / 139

V 2219 01 09



V 2213 01 09



V 2213 05 09



Laguna

ALUMINUM

DESCRIPTION

Laguna is a classic round frame with a larger circumference than Orchid, but retains similar construction for a look that can suit professional or casual styles.

FEATURES

- Aluminum alloy frame with bio-acetate temples
- Adjustable bio-acetate nose pads
- 100% UVA/UVB protection to protect your eyes
- Stainless steel 3-barrel hinges with real rivets

SIZING

49 □ 23 - 145 / 140

V 2217 01 09



V 2217 05 09



Orchid

ALUMINUM

DESCRIPTION

Orchid is a classic round frame with cellulose nose pads and two rivets at each end to ensure comfort and durability. It features similar design but a smaller circumference than Laguna, for a more low-key look.

FEATURES

- Aluminum alloy frame with bio-acetate temples
- Adjustable bio-acetate nose pads
- 100% UVA/UVB protection to protect your eyes
- Stainless steel 3-barrel hinges with real rivets

SIZING

45 □ 23 - 145 / 128

V 2324 01 09



V 2324 05 09



Oriel

ALUMINUM

DESCRIPTION

Oriel is a classic round frame with subtle flair. Its minimalist look is reinforced with aluminum construction, adjustable nose pads, and two-pinned rivets for a more resilient design.

FEATURES

- Aluminum alloy frame with bio-acetate temples
- Adjustable bio-acetate nose pads
- 100% UVA/UVB protection to protect your eyes
- Stainless steel 5-barrel hinges with real rivets

SIZING

47 □ 23 - 145 / 137

V 2212 01 09



Sentinel

ALUMINUM

DESCRIPTION

Sentinel is a sleek rectangular frame for fans of AKILA's Big City sunglasses. Their design is similar to Achilles from the Aluminum Collection, with smaller dimensions for a more subtle look.

FEATURES

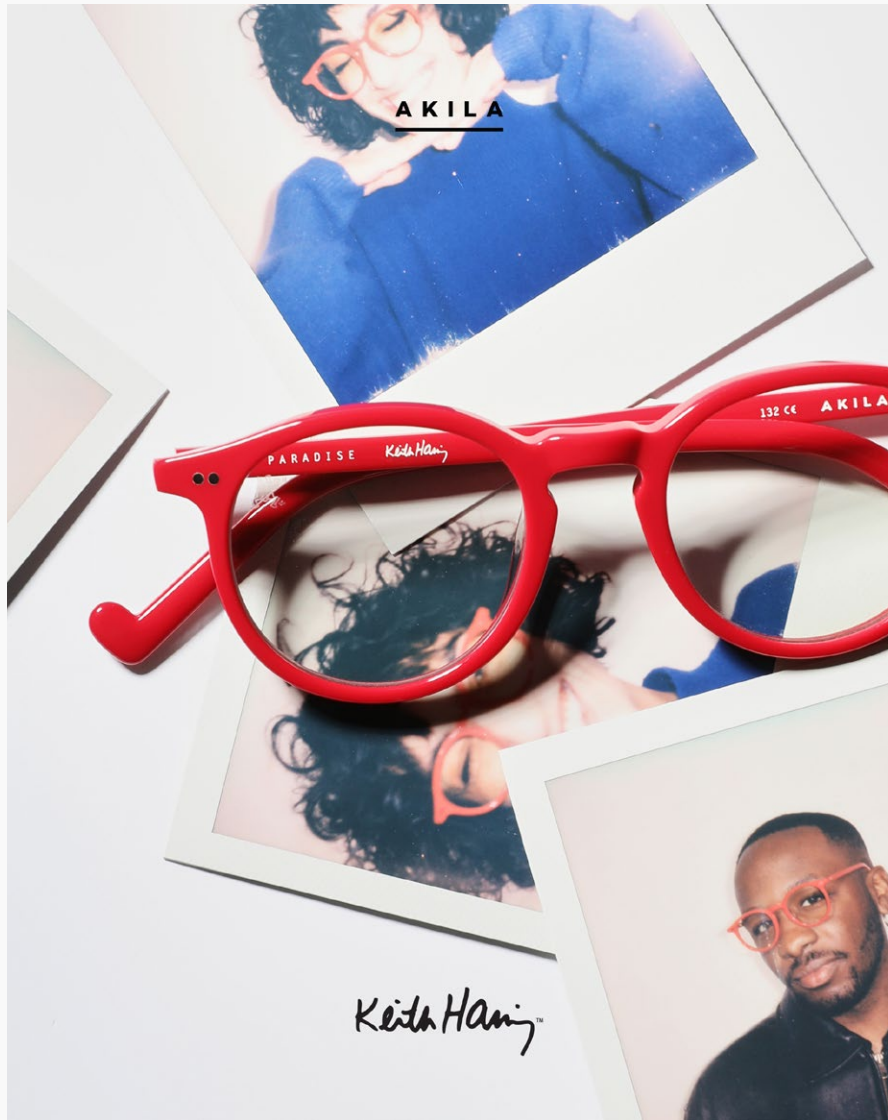
- Aluminum alloy frame with bio-acetate temples
- Adjustable bio-acetate nose pads
- 100% UVA/UVB protection to protect your eyes
- Stainless steel 3-barrel hinges with real rivets

SIZING

48 □ 20 - 145 / 135

V 2212 05 09





COLLABORATIONS

We partner with friends, artists and brands we admire for their modern sensibilities to bring new ideas to market.

By being inclusive rather than exclusive our goal is to give design power back to independent brands and in turn bringing better value to consumers.

Keith Haring

V 2223 01 09



V 2223 62 09



V 2223 42 09



V 2223 09 09



V 2223 37 09



V 2223 55 09



Paradise

COLLAB

DESCRIPTION

Named after the LGBTQ landmark “The Paradise Garage” in SOHO, AKILA’s round optical features Keith Haring’s iconic feet on the temple tips. In partnership with the Keith Haring Foundation, exclusive packaging showcases his artwork on the case and cleaning cloths.

FEATURES

- Eco-conscious acetate frame
- Optical Class 1 nylon lenses for clarity and durability
- 100% UVA/UVB protection
- Durable 5-barrel hinges with stainless steel temple cores for strength and flexibility

SIZING

43 □ 27 – 145 /138



Keith Haring

V 2224 01 09



V 2224 22 09



V 2224 35 09



V 2224 09 09



V 2224 59 09



V 2224 75 09



Radiant

COLLAB

DESCRIPTION

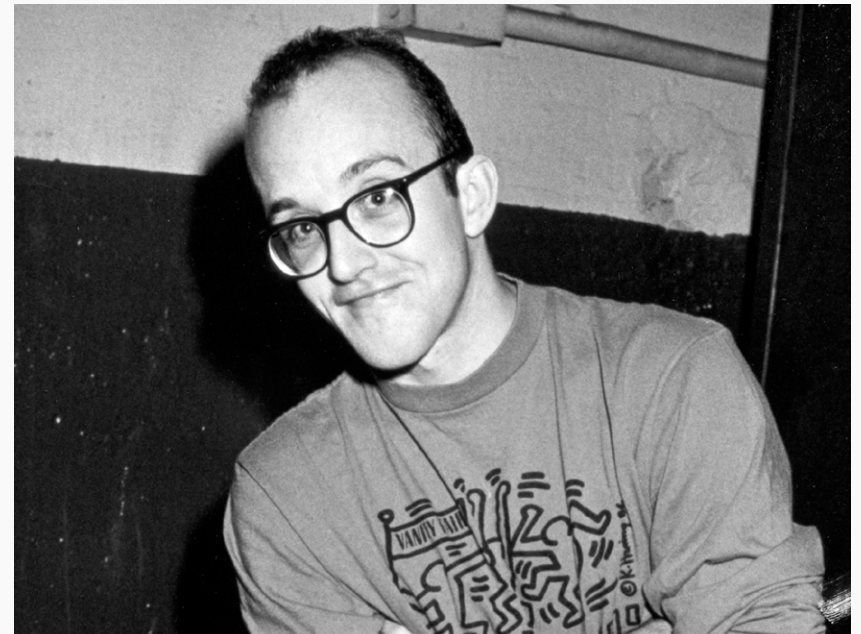
Named after Keith Haring's "Radiant Child," AKILA's round optical features the pop artist's iconic feet on the temple tips. In partnership with the Keith Haring Foundation, exclusive packaging showcases his artwork on the case and cleaning cloths.

FEATURES

- Eco-conscious acetate frame
- Optical Class 1 nylon lenses for clarity and durability
- 100% UVA/UVB protection
- Durable 5-barrel hinges with stainless steel temple cores for strength and flexibility

SIZING

47 □ 27 - 145 / 143





Helena wearing MUSA 2314 66 09

Showrooms

LOS ANGELES

Chris Mart
chris@akila.la

NEW YORK

Brett Taylor
brett@akila.la

TOKYO

Hiroshi Makino
hm@a-enltd.com

LONDON

Rufus Abbott
rufus@thegoodsagency.com

MILAN

Stay True
sales@staytruedistribution.com

100% UVA/UVB BLOCKING



HAND FINISHED

Akila

Los Angeles, CA

USPTO 87936882
FDA 3014539734
DEVICE D340589

WWW.AKILA.LA
@AKILA.LA